



# DRILLING LOG



FROM :(mt) 100

TO :(mt) 3450

SCALE : 1/ 1000

Well Name : LONGTOM-3

Company : Nexus Energy

Country : AUSTRALIA

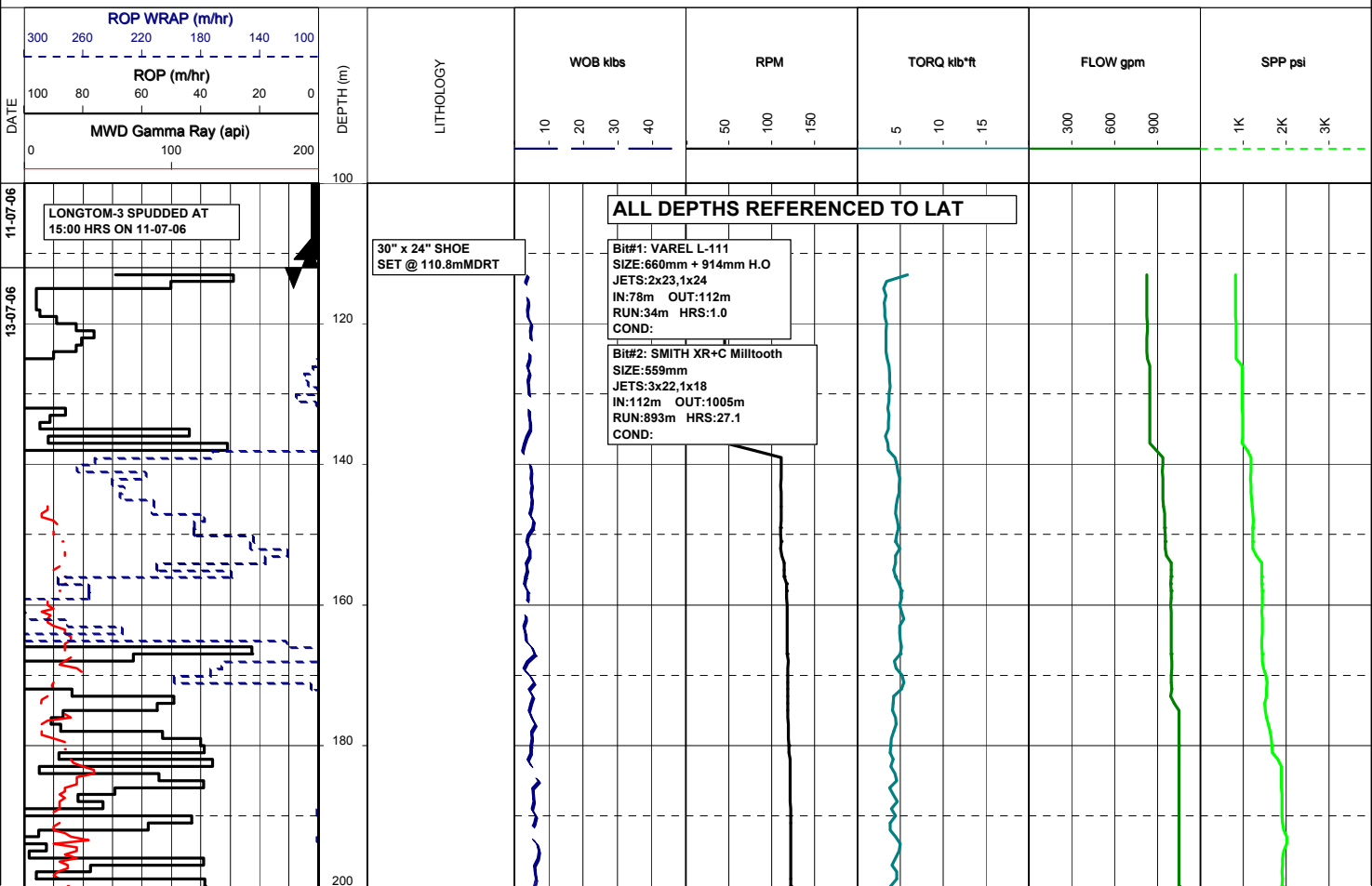
RT-MSL (m): 21.5

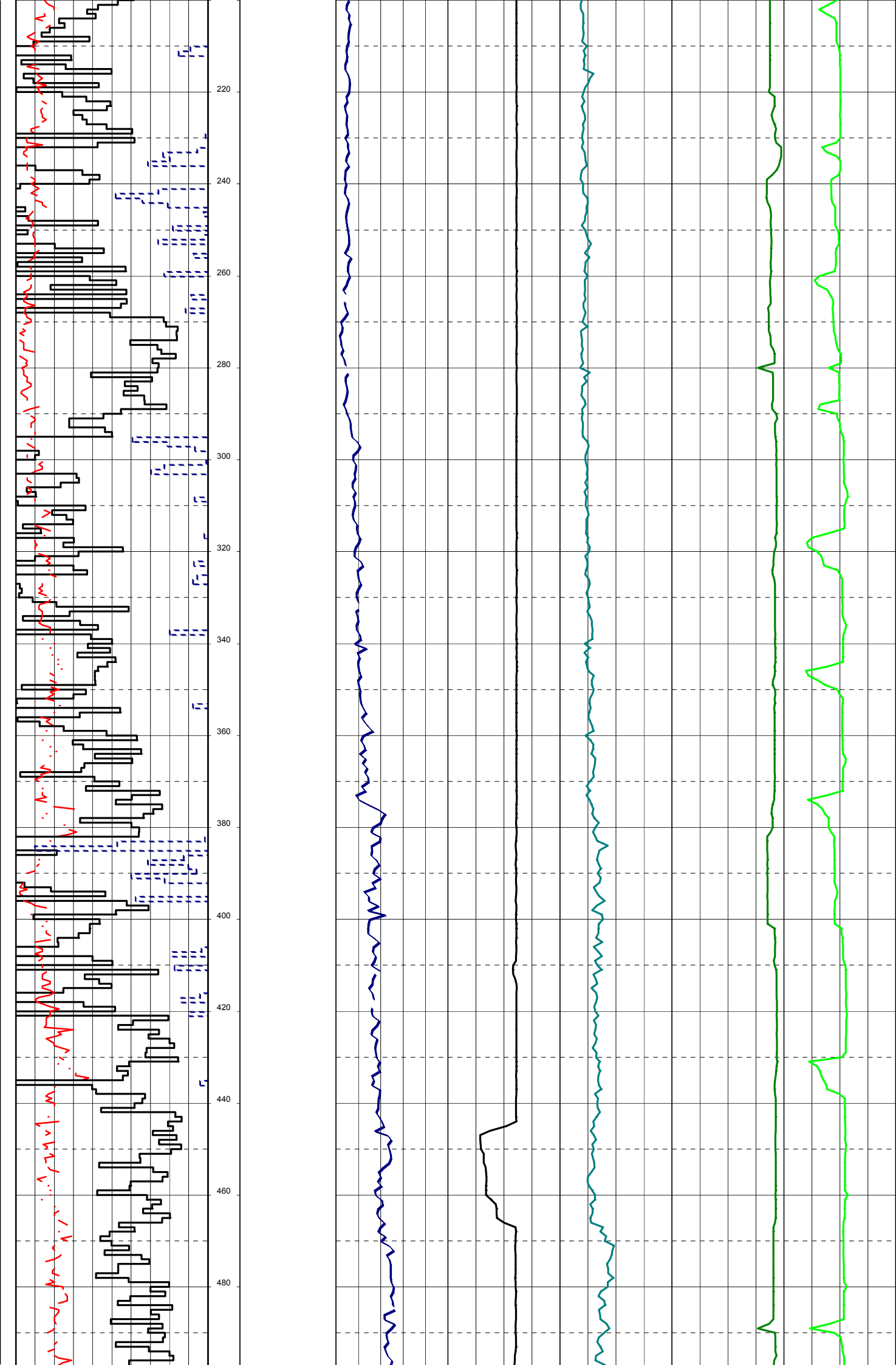
Final TD (mMDRT): m

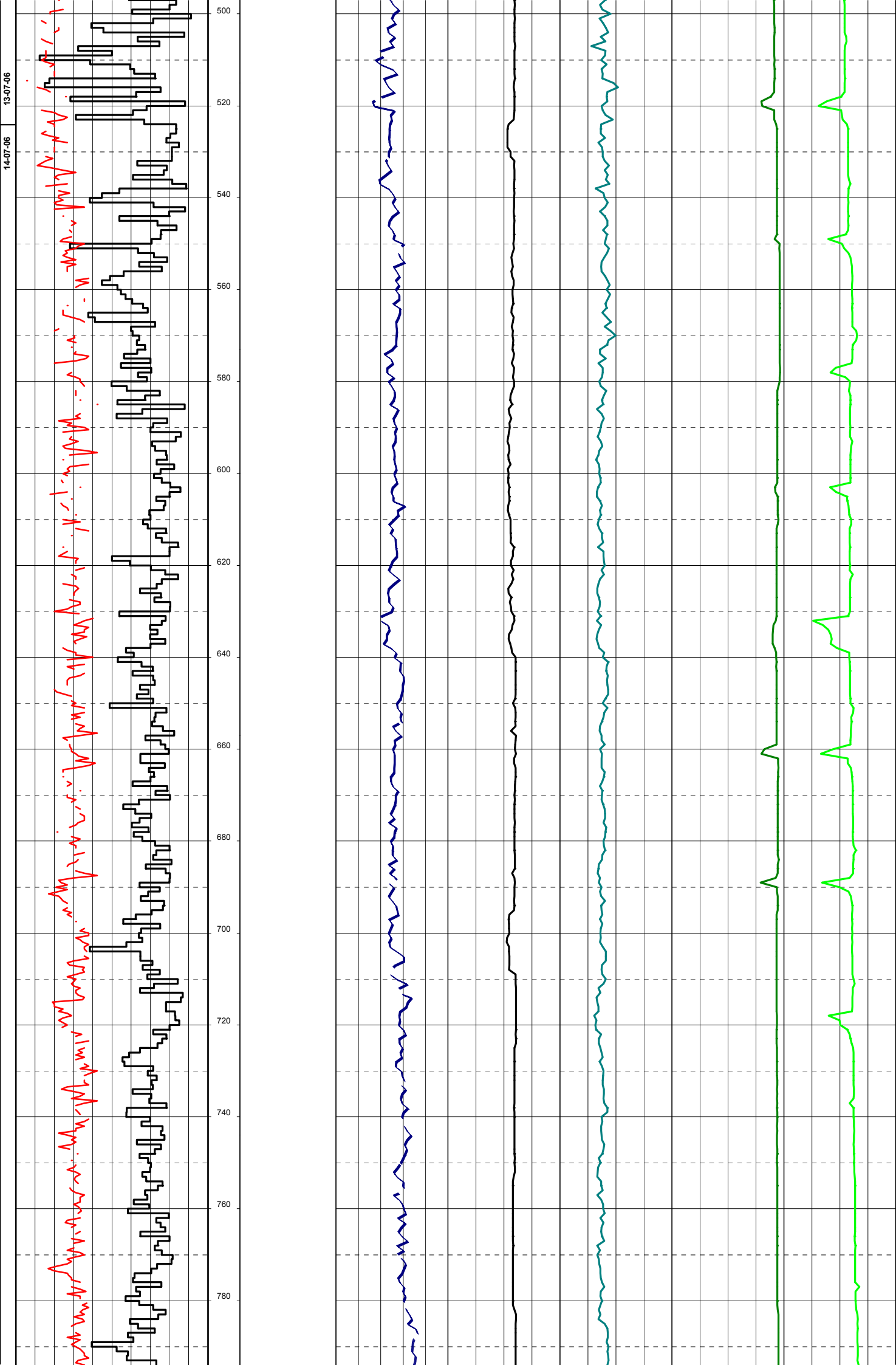
RT-SEABED (m): 78.2

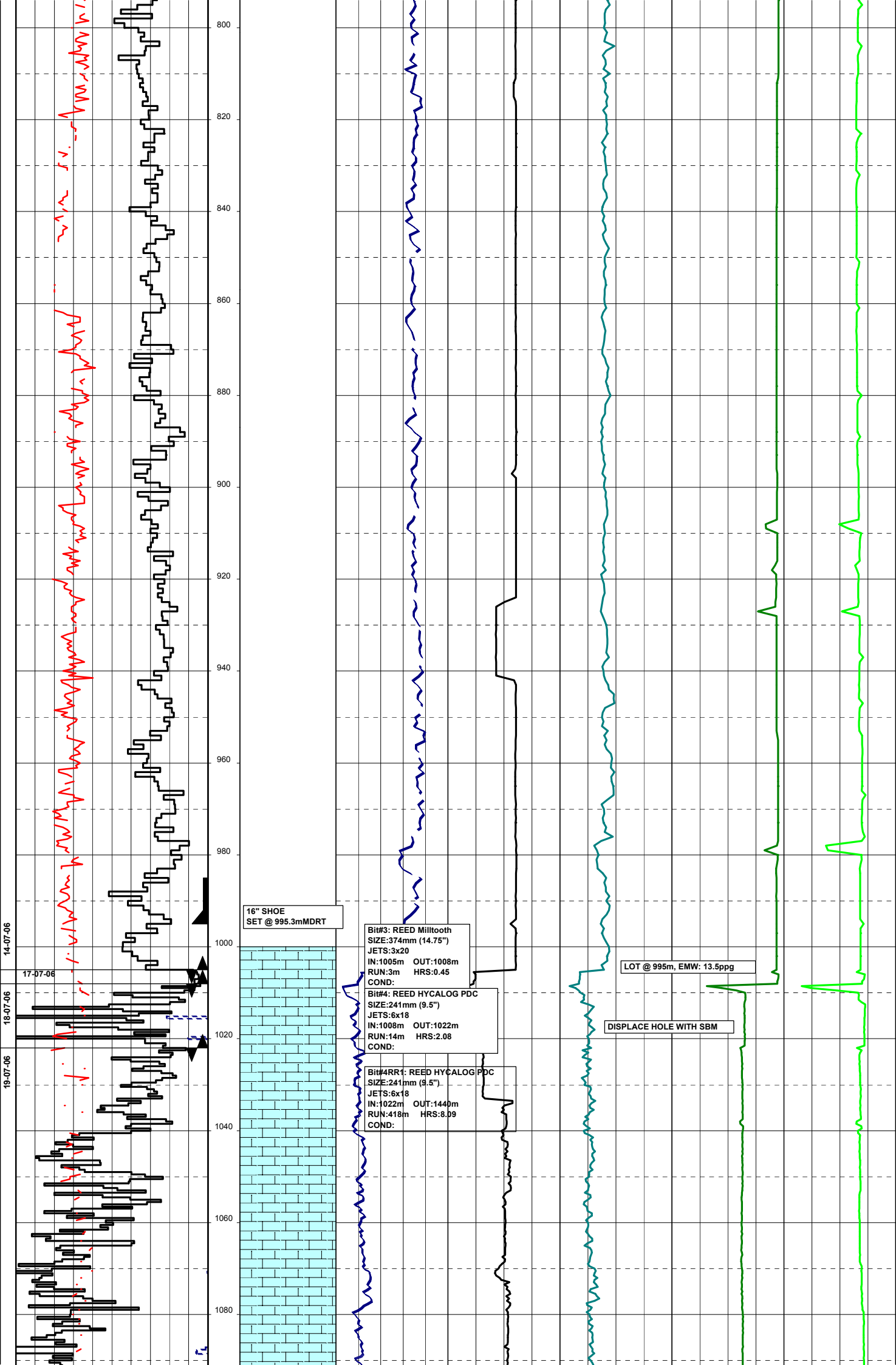
Final TVD (m TVDSS): m

Generated by ALS Package









16" SHOE  
SET @ 995.3mMDRT

Bit#3: REED Milltooth  
SIZE:374mm (14.75")  
JETS:3x20  
IN:1005m OUT:1008m  
RUN:3m HRS:0.45  
COND:

Bit#4: REED HYCALOG PDC  
SIZE:241mm (9.5")  
JETS:6x18  
IN:1008m OUT:1022m  
RUN:14m HRS:2.08  
COND:

Bit#4RR1: REED HYCALOG PDC  
SIZE:241mm (9.5")  
JETS:6x18  
IN:1022m OUT:1440m  
RUN:418m HRS:8.09  
COND:

LOT @ 995m, EMW: 13.5ppg

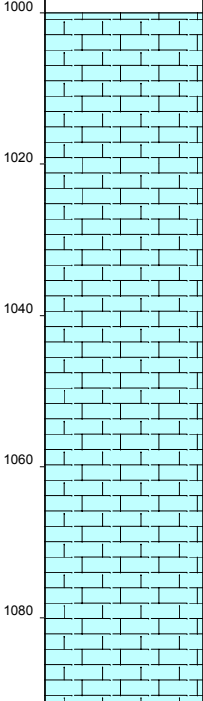
DISPLACE HOLE WITH SBM

14-07-06

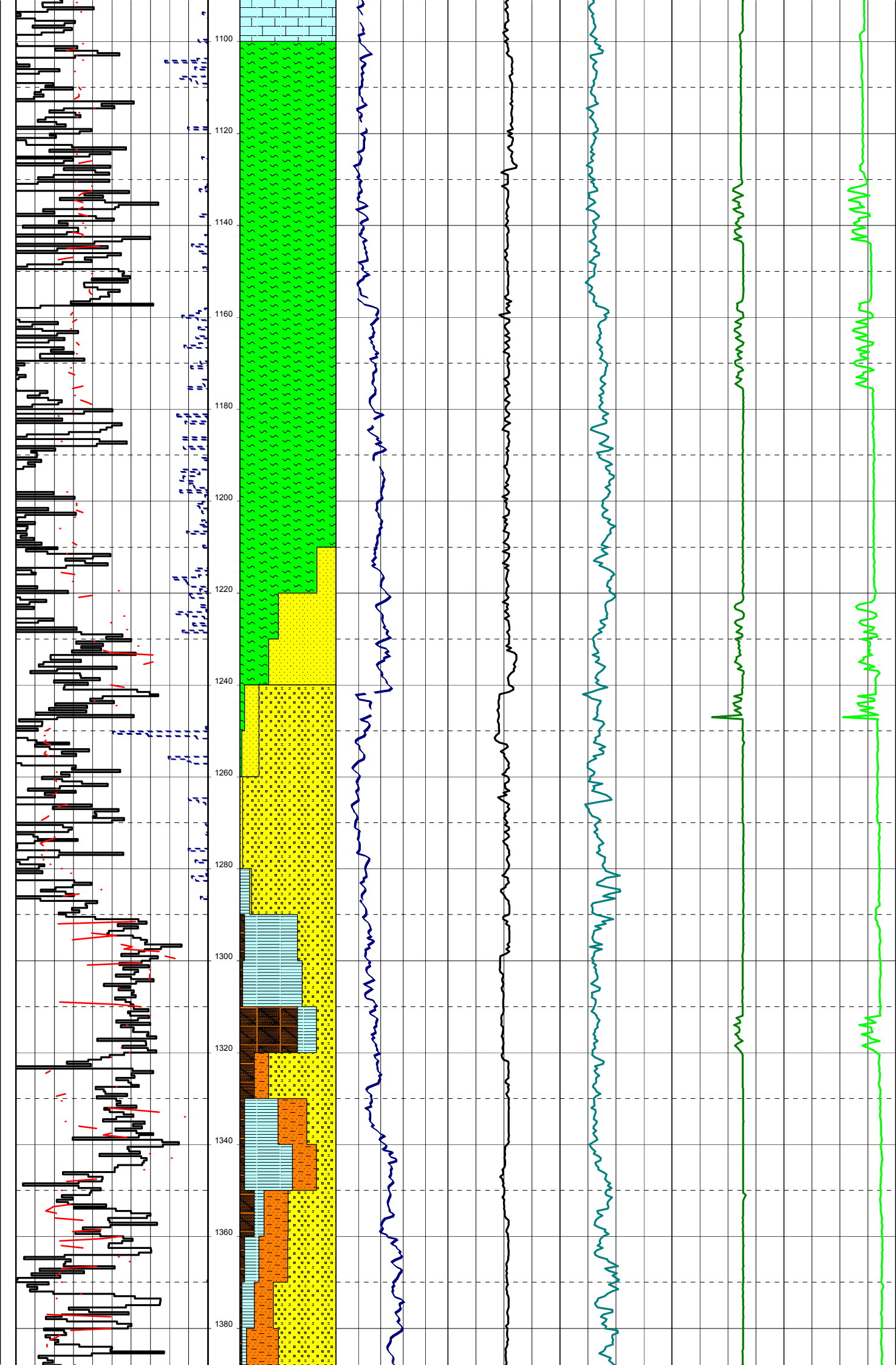
17-07-06

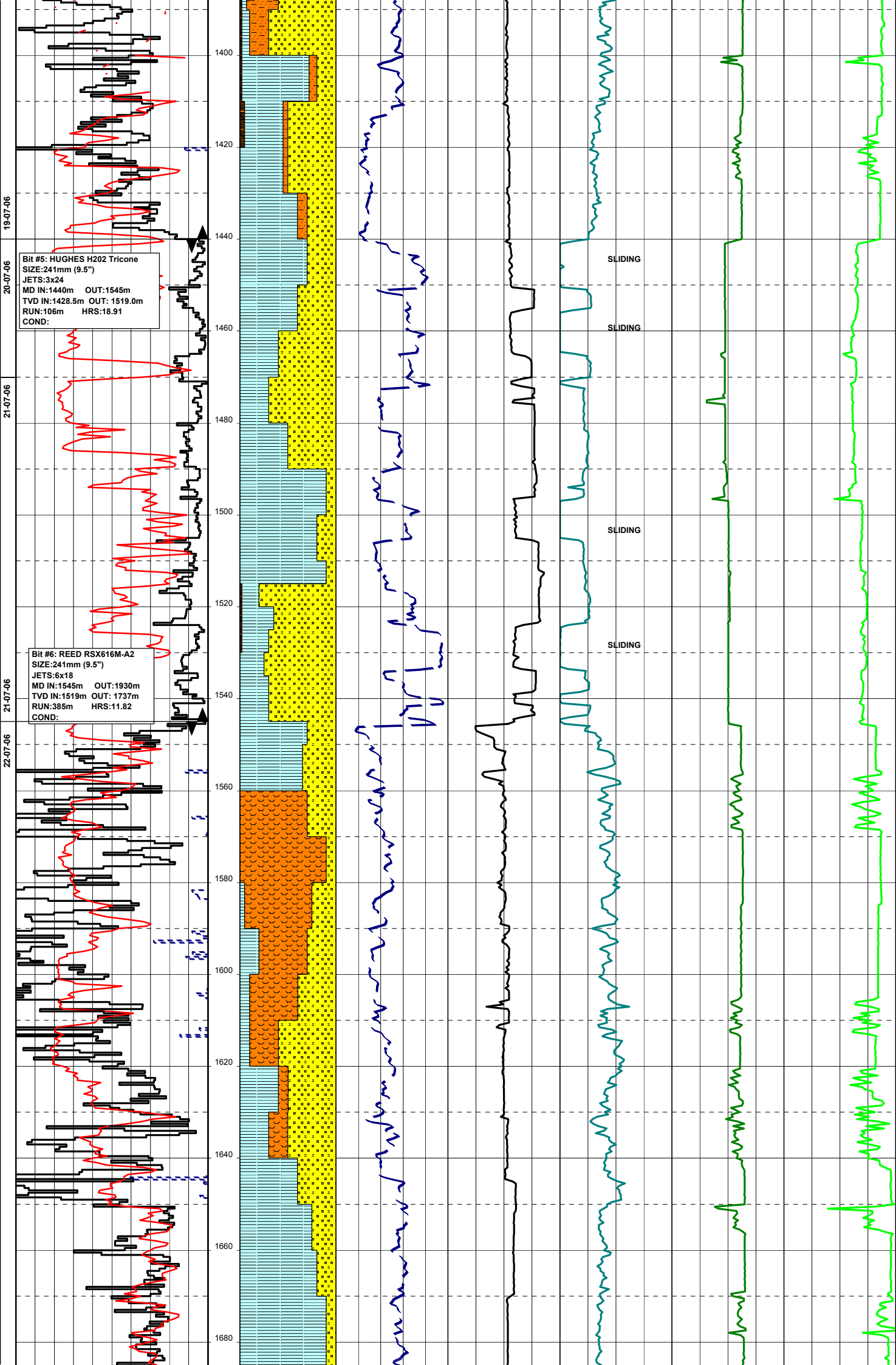
18-07-06

19-07-06



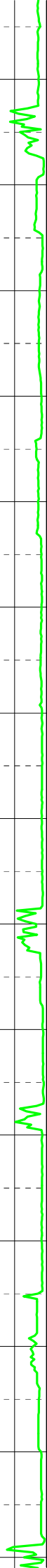
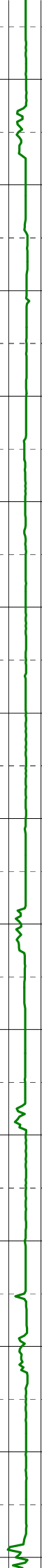
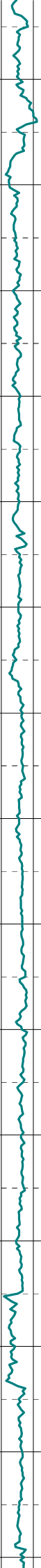
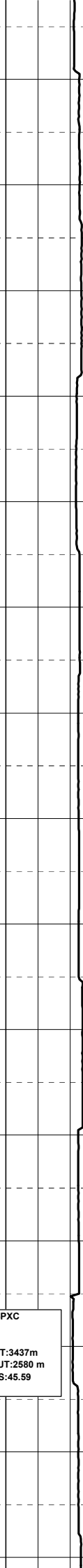
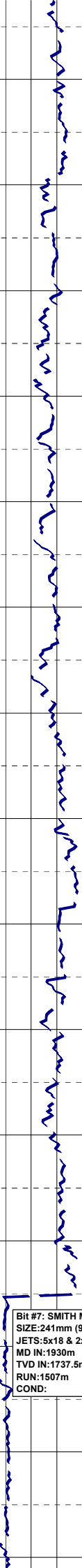
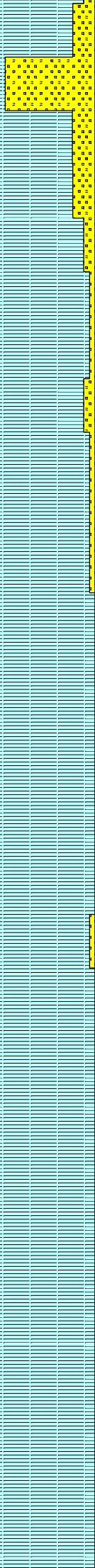
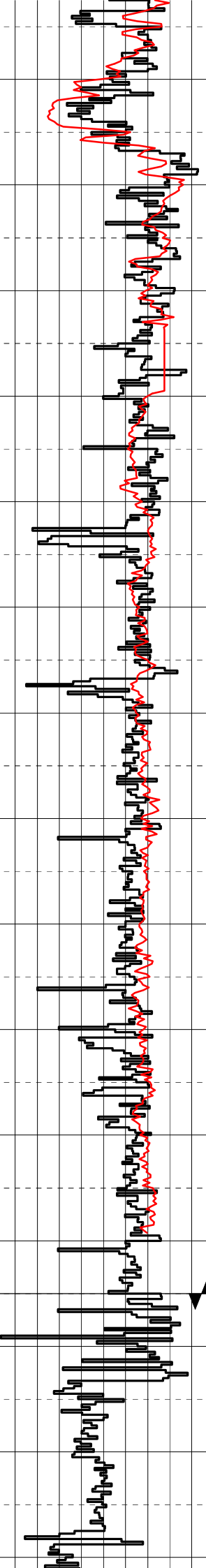
*Handwritten red notes:*  
 1. 1005m to 1008m  
 2. 1008m to 1022m  
 3. 1022m to 1040m  
 4. 1040m to 1060m  
 5. 1060m to 1080m





23-07-06 22-07-06

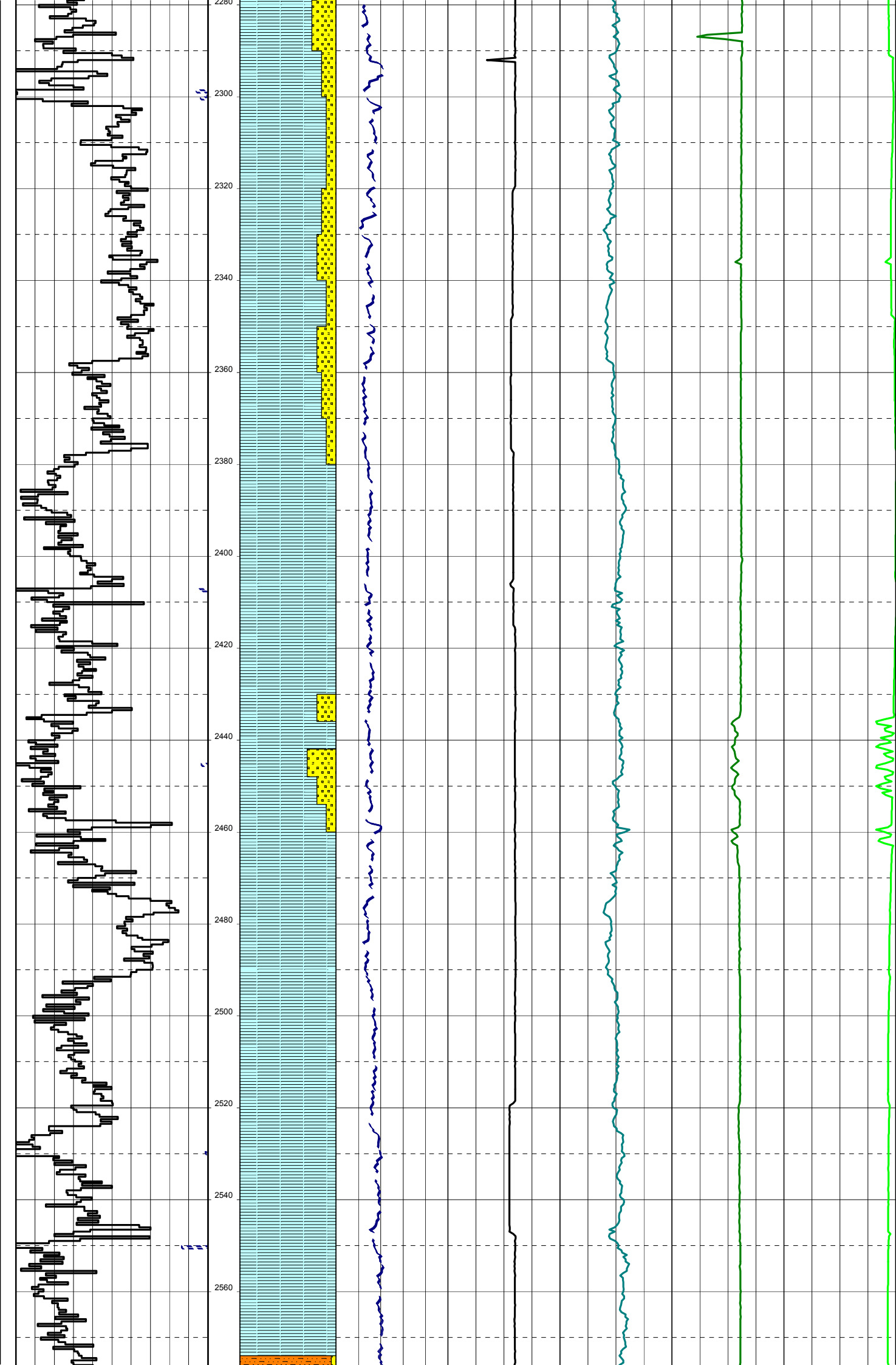
1700  
1720  
1740  
1760  
1780  
1800  
1820  
1840  
1860  
1880  
1900  
1920  
1940  
1960  
1980



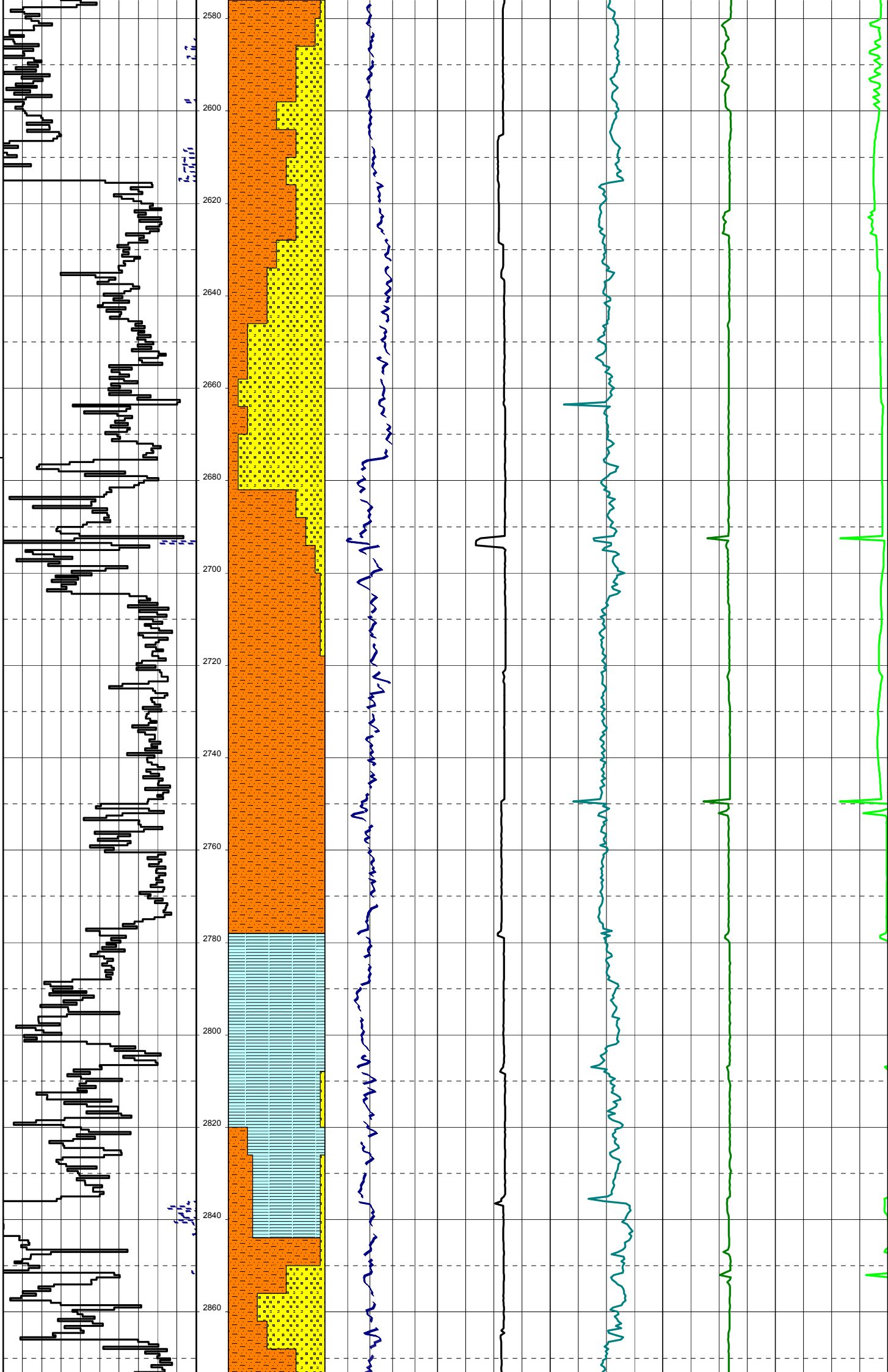
Bit #: SMITH M716PXC  
SIZE:241mm (9.5")  
JETS:5x18 & 2x16  
MD IN:1930m OUT:3437m  
TVD IN:1737.5m OUT:2580 m  
RUN:1507m HRS:45.59  
COND:





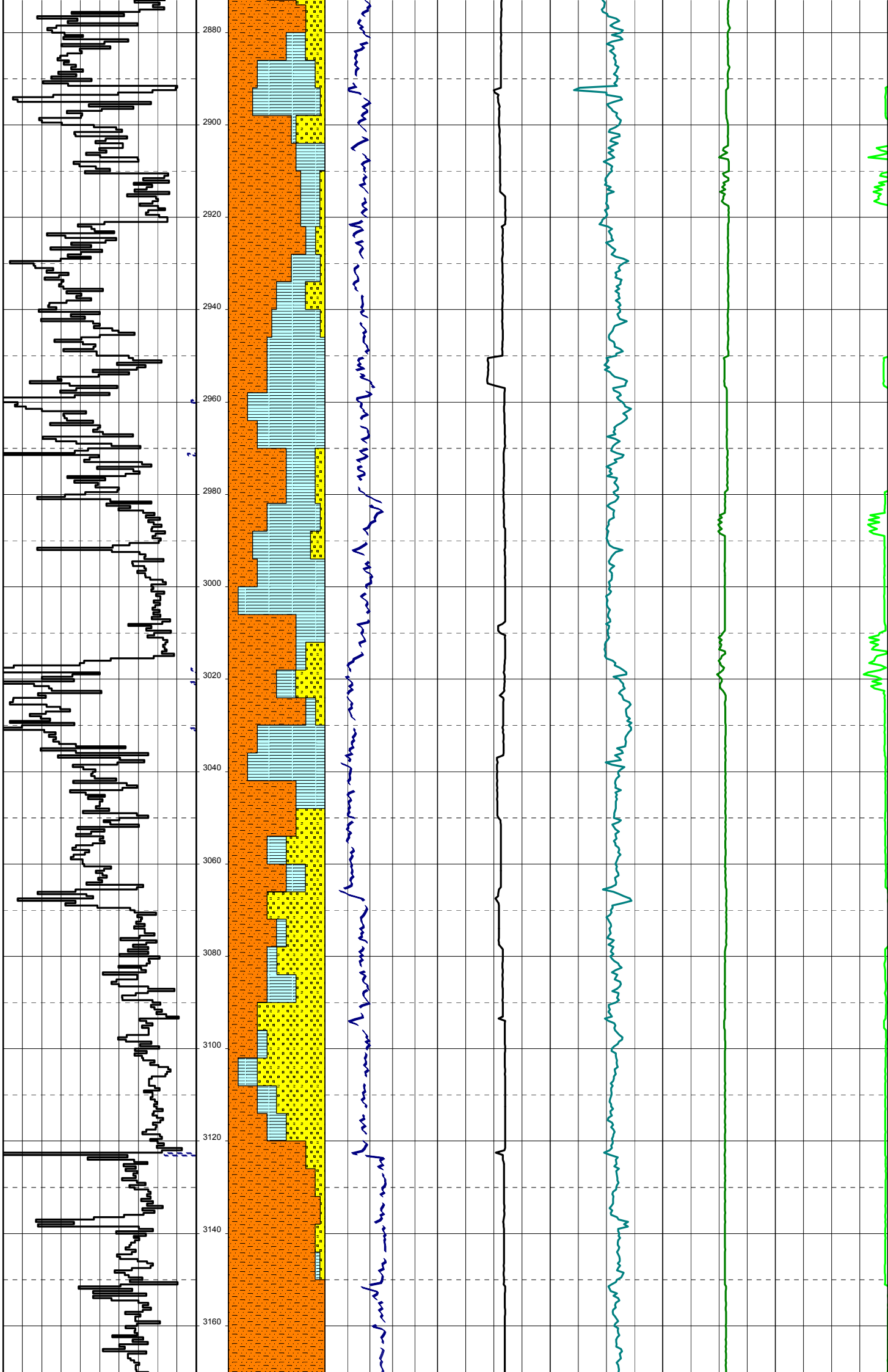


25-07-06

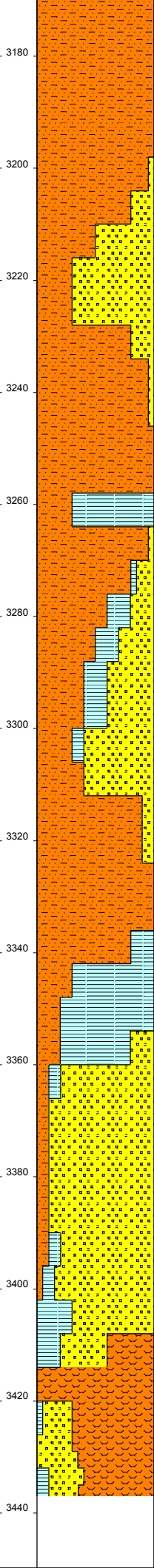
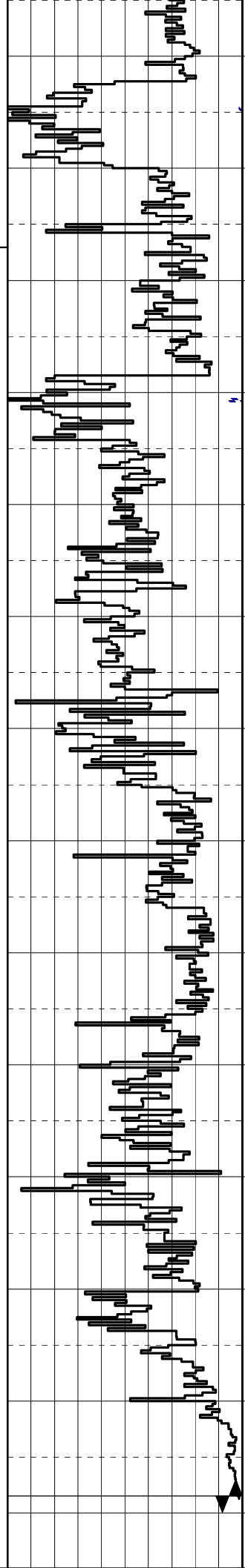


2580  
2600  
2620  
2640  
2660  
2680  
2700  
2720  
2740  
2760  
2780  
2800  
2820  
2840  
2860

Handwritten notes in blue ink, possibly describing lithology or well characteristics.



26-07-06



Handwritten notes in blue ink, possibly describing the lithology or well log data.

